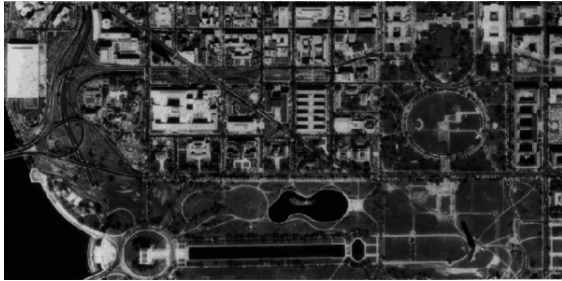


Digital orthophoto quadrangle



An image from a part of a digital orthophoto quadrangle of Washington, DC

A **digital orthophoto quadrangle**^[1] (DOQ) is aerial photography or satellite imagery that has been corrected so that its pixels are aligned with longitude and latitude lines, and have a narrowly defined region of coverage. This is a widely used format introduced by United States Geological Survey (USGS).^[1] The correction technique is called image rectification and is a large part of photogrammetry.^[2]

DOQs produced by the USGS cover an area measuring 7.5-minutes longitude by 7.5-minutes latitude (the same area covered by a USGS 1:24,000-scale topographic map, also known as a 7.5-minute quadrangle) or 3.75-minutes by 3.75-minutes. The second format is also known as a **digital orthophoto quarter quadrangle** (DOQQ) because each covers one quarter of a quadrangle (four 1:12,000-scale DOQQs display the same area as one 1:24,000-scale DOQ).^{[3][4] [5]}

1 See also

- Orthophoto
- QDGC

2 References

- [1] “USGS GeoData Digital Orthophoto Quadrangles” (PDF). *USGS Fact Sheet 057-01*. United States Geological Survey. May 2001. Archived from the original (PDF) on 2010-05-27.
- [2] “Introduction to Photogrammetry”. *The Aerial Archive*. Institute for Prehistory and Protohistory of the University of Vienna. Archived from the original on 2006-09-24.
- [3] “USGS DOQ History”. United States Geological Survey: Western Region. Retrieved April 24, 2012.

- [4] “USGS 7.5-minute maps”. United States Geological Survey: Eastern Geographic Science Center. Retrieved April 24, 2012.

- [5] “DOQHEAD Toolkit”. United States Geological Survey: Rocky Mountain Mapping Center. June 22, 1998. Archived from the original on 2011-10-18.

3 External links

- U.S. Geological Survey Mapping in the 20th Century: 1980's - Digital Orthophoto Quadrangles
- Birthplace of the DOQ — USGS Western Region

4 Text and image sources, contributors, and licenses

4.1 Text

- **Digital orthophoto quadrangle** *Source:* https://en.wikipedia.org/wiki/Digital_orthophoto_quadrangle?oldid=754520731 *Contributors:* Dmmaus, Rajah, Gary, Ragnvald, Pegship, Zywx, Omnicog, Mrflip, PbBot, Fadesga, EmausBot, ClueBot NG, B14709, Mohamed-Ahmed-FG, InternetArchiveBot and Anonymous: 2

4.2 Images

- **File:Bottomley_projection.png** *Source:* https://upload.wikimedia.org/wikipedia/commons/4/4b/Bottomley_projection.png *License:* Public domain *Contributors:* ? *Original artist:* ?
- **File:Crystal_Clear_device_camera.png** *Source:* https://upload.wikimedia.org/wikipedia/commons/9/99/Crystal_Clear_device_camera.png *License:* LGPL *Contributors:* All Crystal Clear icons were posted by the author as LGPL on kde-look; *Original artist:* Everaldo Coelho and YellowIcon;
- **File:DOQ.gif** *Source:* <https://upload.wikimedia.org/wikipedia/commons/d/de/DOQ.gif> *License:* Public domain *Contributors:* Web page: U. S. Geological Survey Mapping in the 20th Century *Original artist:* United States Geological Survey
- **File:Earth_Gravitational_Model_1996.png** *Source:* https://upload.wikimedia.org/wikipedia/commons/3/3b/Earth_Gravitational_Model_1996.png *License:* Public domain *Contributors:* <http://cddis.nasa.gov/926/egm96/egm96.html> *Original artist:* F. G. Lemoine, S. C. Kenyon, J. K. Factor, R.G. Trimmer, N. K. Pavlis, D. S. Chinn, C. M. Cox, S. M. Klosko, S. B. Luthcke, M. H. Torrence, Y. M. Wang, R. G. Williamson, E. C. Pavlis, R. H. Rapp and T. R. Olson, NASA Goddard Space Flight Center, Greenbelt, Maryland, 20771 USA, July 1998.

4.3 Content license

- Creative Commons Attribution-Share Alike 3.0